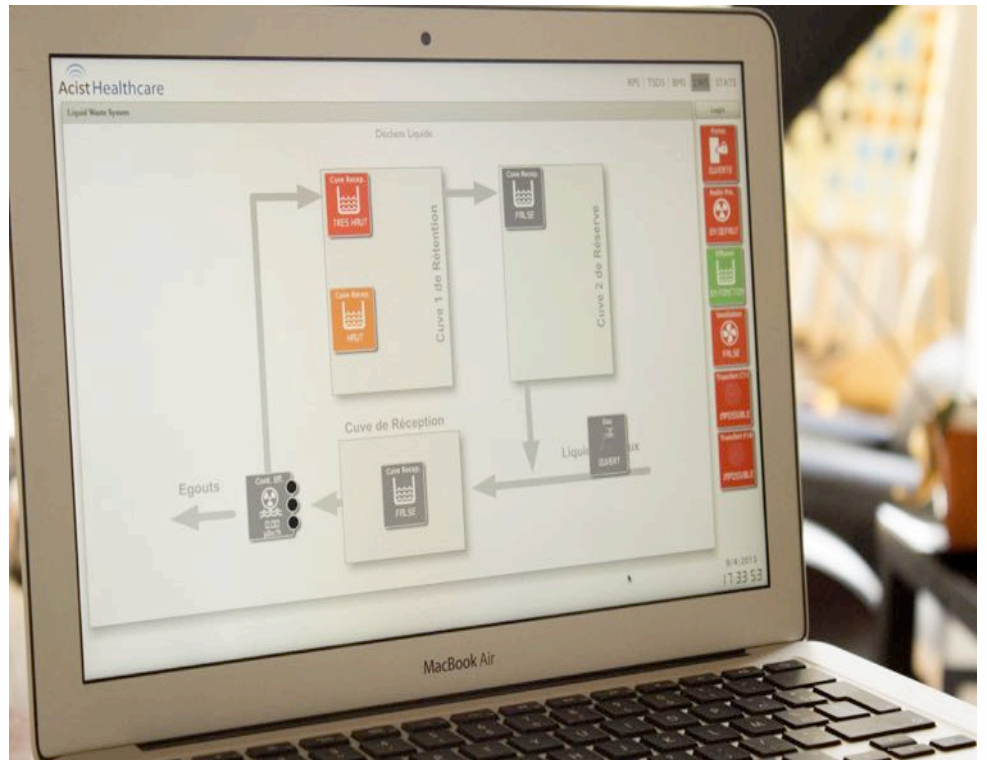


# DATA SHEET Liquid Waste System



## Liquid Waste System :

L.W.S is an automated system which is intended to be used for managing liquid wastes generated by radioisotopes production facilities.

L.W.S allows collecting radioactive liquid waste into tanks.

If the radiation level rises above a predetermined threshold, the liquid is directed towards a tank and stocked during 10 periods.

This system controls a three-port valve which directs liquid waste

towards the sewer or towards the tank.

### Operating Process

L.W.S ensures liquid waste management by monitoring radiation level of the liquid waste.

L.W.S allows liquid waste management by:

- > Controlling a three-ports valve and water supply
- > Managing tanks level
- > Determining of half-life

> Informing staff on L.W.S status (tank level, radiation level, valve position...).

Database collects the information for displaying, alerting and backup.

The displayed module's screens are specific but can be designed according to your needs.

Database can be used in maintenance mode or multi-site mode through remote access.



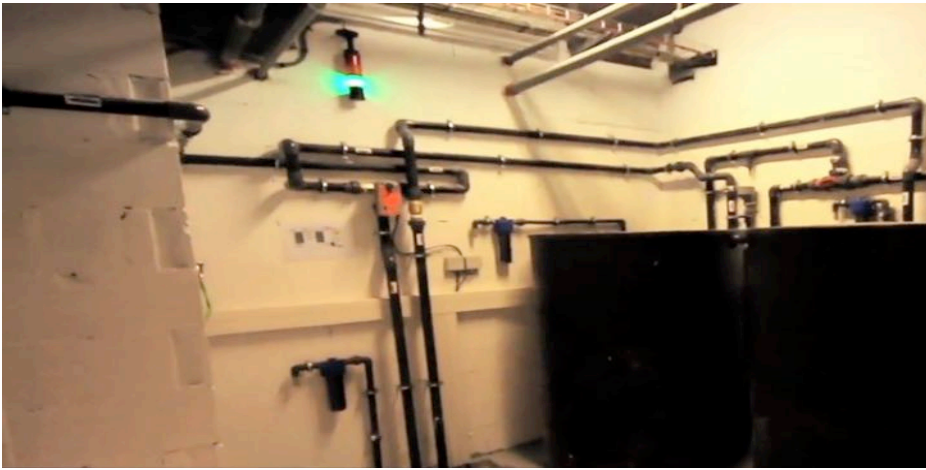
Acist Healthcare solution. is designed to collect the facility information.

Acist Healthcare solution. allows supervising, alerting and acting on installation in order to preserve property and persons.

Acist Healthcare solution. is equipped with different modules to control radiation, to manage transfer or the cyclotron access. These modules are integrated in function of your needs.

**Acist Healthcare solution**

[www.psi-nm.com](http://www.psi-nm.com)



## L.W.S. Features (Tank , valve, tubes are not included.)

Radiation Liquid Probe	
Probe Type	<b>Nal scintillation crystal</b>
size NaI	<b>1" X 1"</b>
Background	<b>25 Cps to 100nSv/h</b>
Performance	<b>250 cps/*Sv/h (137-Cs)</b>
Power Supply	
Valve	<b>24 VDC</b>
Level	<b>24 VDC or Free Contact</b>
PLC	<b>1 - (S7-200)</b>
Boolean	<b>10 Input / 6 Output</b>
Counter	<b>4</b>
Serial	<b>1*RS485</b>

## Available Options

- Additional managed Tank
- Additional managed Valve
- Analogic level
- Alarms management of flood
- Extended Warranty (up to 5 years)

- **LWS is a Liquid Waste System**
- **LWS manages liquid waste generated by radioisotopes production facility.**
- **LWS manages alarm and history**
- **LWS manages user rights.**
- **LWS manages valve depending of radiation value.**
- **LWS supports remote access**
- **LWS is part of Acist Healthcare solution**

## PSI Nuclear Medicine

23 Rue des Loges  
91410 St Cyr Sous Dourdan - FRANCE

Phone : +33 (0) 632 661 514  
Fax : +33 (0) 466 774 510  
Mail : [contact@psi-nm.com](mailto:contact@psi-nm.com)

[www.psi-nm.com](http://www.psi-nm.com)